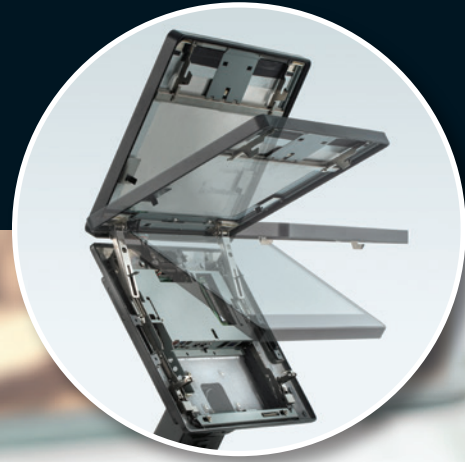


POSIFLEX

Industry-First Clamshell Design POS



Redefine
POSsibility

Haydn ZT Series

Raise Total
Business Efficiency

Increase in
Maintenance Effectiveness
4X

Reduction
in Downtime
400%



Adhering to a people-oriented and customer-centric principle, Posiflex is recognized as a leading company in the industry, and has been consecutively named as the global POS leader in RBR's report for many years. Posiflex continues to seek innovation across new technologies and commercial IoT solutions to create a faster retail transaction environment, and a more convenient life!

Owen Chen, CEO of Posiflex Technology Inc.



Haydn ZT Series

Tailored for Driving Innovation and Business Efficiency

Seamless Point-of-Sale usage is critical for retail businesses. Any downtime can result in higher costs and lower profit margins. The Posiflex ZT series is an unprecedented line of POS terminals with a new concept featuring an industry-first clamshell opening that redefines the traditional mechanical form factor with a smarter, more customer-centric design. Thanks to its one-touch open function, the daily operations, regular maintenance and upgrade effort have never been so fast and easy!

The ZT series integrates with the powerful Intel® Tiger Lake and Elkhart Lake CPUs with rigorous IP-rated protection, and offers hidden I/O port protection, excellent 3-way cable management and advanced USB port security. Available in 15" and 15.6" screen size options, the terminal allows 0-90° foldable angle to work perfectly in different scenarios. The Posiflex ZT series not only advances today's POS industry standards through innovation, but also doubles your productivity significantly and effectively.



The industry-first clamshell design

The hook-like design enables faster, easier maintenance



Hidden I/O ports protection

The versatile I/O is hidden with more secure data protection



Secure USB port protection

Prevent any untrusted device from connecting to the USB port



IP-rated protection

Tested to withstand for hardened environments



Fan-free cooling system

Enables a quiet and reliable operation



Hidden adapter design

For space saving and better table management



0-90° foldable angle

The unique hinge design enables 0-90° adjustable viewing angle



Screw-less and modular design

The patented screwless and modular design are easy for maintenance



Die-cast aluminum casing

Offering reliable and stable operating performance



Smoother Business Operations Are Just a Touch Away

For most customer-centric businesses including retail stores, restaurants and grocery shops, Point-of-Sale is a vital lifeline. With lots of aspects and operations of your business relying on the POS system, it is important to ensure that it works smoothly and efficiently. The Posiflex ZT series features a clamshell design allowing easy access to the internal components for fast maintenance. Unlike the traditional mechanical structure, the ZT series adopts a screw-less and a whole modular design, allowing the hood-like monitor case to be quickly opened with just one touch, which is convenient for repair, replacement and even upgrade. The whole process can be completed in about one minute, which is more efficient than ordinary POS machine maintenance. With ZT series, it is just that easy!

Industry-first clamshell design | Easy to maintain with the hood-like opening design



Step 1

Press one-touch button



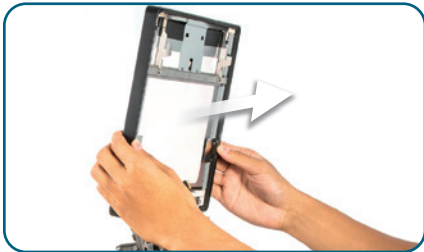
Step 2

Uncover the monitor case



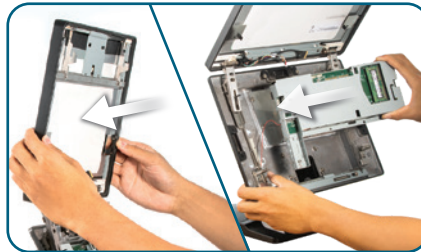
Step 3

The modular mainboard can be removed by pressing four points



Step 4

The modular screen case can be detached by simply moving the screen to the right



Step 5

The screen can be installed by simply moving to the left. Once you hear the "click" sound, it is installed in place; and the mainboard can be inserted quickly by pressing four points



Step 6

Cover the monitor case to complete the maintenance

Help Your Business Succeed

Raise Total Business Efficiency

Increase in Maintenance Effectiveness*

4X

Reduction in Downtime*

400%

* Compare ZT series to traditional POS terminals

Ramping up the Efficiency Wherever It is Deployed

The Posiflex ZT series POS terminals are designed for supermarkets, convenience stores, pharmacies, grocery stores, restaurants, coffee shop and other catering establishments. A rugged yet sleek POS design offers flexible and effective deployment options so that you can tailor it to fit specific workstation settings, including desktop, wall-mount and free-standing pole mount.

With its unprecedented clamshell and screw-less design, the ZT series enables engineers to easily access internal modular components for fast maintenance in the field, allowing uninterrupted operation and service. The ZT series POS terminals can help grow your business greatly and efficiently.



Specially Designed and Built to Last

The day-to-day rigors and constant use leave POS terminals exposed to dust, dirt, grease and spills. The ZT series is powered by the latest 11th Gen Intel® Tiger Lake and Elkhart Lake processors and is capable of running virtually any POS task imaginable. Benefiting from its fanless design and IP-rated protection, the ZT series is rugged and durable enough to withstand harsh retail conditions so as to extend the longevity of your investment. In addition, the USB port lock design prevents unauthorized data transfer and reduces computer virus infection to keep your data secure and customers safe.



IP-rated protection



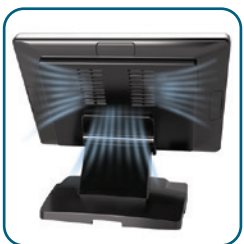
Secure USB port protection



Hidden I/O ports protection



Hidden adapter design



Aluminum die-casting

The die-cast aluminum casing design provides an effective cooling solution for heat dissipation to offset thermal damage. Even with long-term use in extreme environments, the ZT series still maintains its performance in durability and reliability.



0-90° foldable angle

To serve as a people-oriented POS terminal, the ZT series supports a unique swivel hinge design with 0-90° stepless adjustable rotation, providing users a more comfortable viewing angle. In addition, it can be flexibly adapted to any deployment scenario.



Elegant and sleek appearance

Meticulously designed to adapt to diverse retail and hospitality applications, the ZT series combines durable yet sleek, modern design with hidden cable management to eliminate clutter. This not only improves the store ambiance, but also exudes a better user experience.



Haydn ZT Series

Industry-First Clamshell Design POS



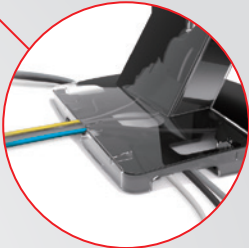
IP-rated protection



15" and 15.6" True-flat PCAP touch display



Secure USB port



3-way cable management

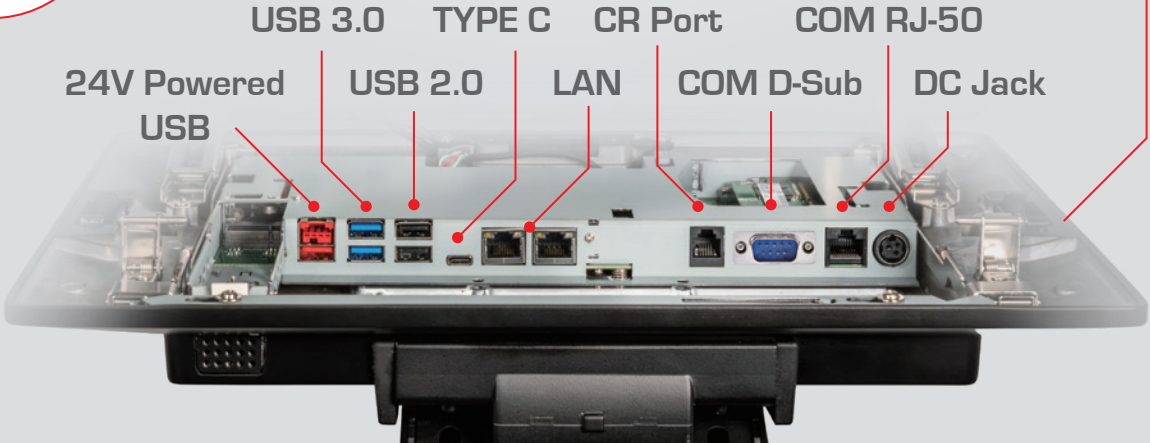


Clamshell design



Adapter-hidden base

Hidden I/O design



ZT-3700 Series

ZT-3100 Series

Processor	Intel Tiger Lake Celeron 6305E Intel Tiger Lake Core i3-1115G4E Intel Tiger Lake Core i5-1145G7E (Intel Tiger Lake Core i7 is available by project)	Intel Elkhart Lake Celeron J6412
Memory	DDR4 SO-DIMM x 2, 64GB max	DDR4 SO-DIMM x 2, 32GB max
Storage	M.2 connector [SATA Signal Only] x 2	M.2 connector [SATA Signal Only] x 2
Intel vPro Support	Core i5 / Core i7	N/A
RAID Function	Yes	N/A
TPM Support	TPM 2.0	Optional
Operating System	Windows 10 IoT 64 bit	Windows 10 IoT 64 bit
Display	15" PCAP, 1024 x 768, 350 nits 15.6" PCAP, 1920 x 1080, 300 nits	15" PCAP, 1024 x 768, 350 nits 15.6" PCAP, 1920 x 1080, 300 nits
Serial Port	2, D-SUB 9-Pin x 1 + RJ-45 x 1	2, D-SUB 9-Pin x 1 + RJ-45 x 1
Standard USB Port	5, USB 3.0 x 2 + USB 2.0 x 3	5, USB 3.0 x 2 + USB 2.0 x 3
PoweredUSB Port	24V x 1	Optional, 24V x 1
Cash drawer Port	1, support 24V cash drawer	1, support 24V cash drawer
Display Port	2, internal 40-pin eDP [support Posiflex 2 nd monitor] x 1 + USB type-C [USB3.0 + DP signal] x 1	2, internal 40-pin eDP [support Posiflex 2 nd monitor] x 1 + USB type-C [USB3.0 + DP signal] x 1
LAN Port	10/100/1000 Mb x 2	10/100/1000 Mb x 2
Audio	Internal 2W speaker x 1+ internal microphone x 1	Internal 2W speaker x 1+ internal microphone x 1
Expansion Slot	M.2 x 1 [for Wi-Fi 6 / Bluetooth]	M.2 x 1 [for Wi-Fi 6 / Bluetooth]
Power Supply	24V / 120W	24V / 60W [24V / 120W for optional PoweredUSB]
Peripheral Options	MSR, 2D Scanner, RFID, Fingerprint Sensor, Second Display	MSR, 2D Scanner, RFID, Fingerprint Sensor, Second Display

Certifications



* Designed and Manufactured in Taiwan by Posiflex Technology, Inc.

* The product information and specifications are subject to change without prior notice.

* Please refer to the website for more attachment options.

Worldwide Offices

Headquarter | POSIFLEX TECHNOLOGY, INC.

No. 23, Datong St., Tucheng Dist., New Taipei City 23679, Taiwan

Tel : +886 2 2268 5577 E-mail : sales@posiflex.com.tw

Fax : +886 2 2268 5388 www.posiflex.com

China

Tel : +86 010 63634602

Fax : +86 010 63634887

E-mail : sales@posiflex.com.tw

Japan

Tel : +813 6450 1299

Fax : +813 6432 4066

E-mail : sales@posiflex.com.tw

India

Tel : +91-80-40782700

E-mail : enquiry@posiflexindia.com

Germany

Tel : +49 202 260448 0

Fax : +49 202 260448 22

E-mail : sales@posiflex.com.tw

Malaysia

Tel : +603 7885 9199

Fax : +603 7885 9193

E-mail : sales@posiflex.com.tw

Middle East & North Africa

Tel : +971 4 566 8608

E-mail : sales@posiflex.com.tw

USA

Tel : +1 510 429 7097

Fax : +1 510 475 0982

E-mail : sales.department@posiflexusa.com

Singapore

Tel : +65 6385 5669

Fax : +65 6385 5659

E-mail : sales@posiflex.com.tw

South Africa

Tel : +27 11 237 1771 / +27 11 237 1772

E-mail : sales@posiflex.com.tw



© 2023 Posiflex Technology, Inc.

All rights reserved. All other trademarks are the property of their respective owners. In a continuing effort to improve our products, Posiflex Technology, Inc. reserves the right to change specifications and features without prior notice.