

KS-7412/7412P



Specification	KS-7412	KS-7412P
Processor	Intel Bay Trail J1900 Quad Core CPU, up to 2.42 GHz, 2M Cache	
System Memory	DDR3L SO-DIMM slot x 1, max. 8GB	
Storage Device	SATA storage x 1	
Power Supply	12V/60W	
OS Support	Windows 7/POSReady 7/Windows Embedded 8.1 Industry/Windows 10 IoT/Linux per request	

Display & Touch		
LCD	12" TFT LCD	
Resolution	1024 x 768	
Touch	5-wire Resistive touch	True-flat PCAP touch with multi-touch support (IP65 on front panel)

I/O & Expansion		
Serial Port	4, DB9 x 2 + RJ45 x 2, 5V/12V support on all COM ports	
Parallel Port	1, via optional conversion cable through service window	
Standard USB Port	USB 2.0 x 6	
LAN Port	10/100/1000 Mb x 1	
Display Port	VGA x 1, 12V support for Posiflex monitors	
CR Port	1, control 2 CR via optional Y-cable	
PS/2 Port	1, via optional conversion cable through service window	
Audio	Internal 2W speaker x 1 + Line-out	
Expansion Slot	M.2 slot x 1	

Physical Dimension		
Dimension (W x D x H in mm)	297 x 252 x 273	
Weight (N. W. in kg)	3.13	

Environmental		
Operating Condition	0°C - 40°C, 20%RH - 90%RH (Equipped with HDD); 0°C - 50°C, 20%RH - 90%RH (Equipped with SSD)	
Storage Condition	-20°C - 70°C, 10%RH - 90%RH	

Built-in Options		
WiFi	M.2 WiFi/BT module	

Attachment Options		
POS Monitor	7" TFT USB LCD non-touch 9.7" TFT LCD non-touch (bezel-free/bezel type) 9.7" TFT LCD with PCAP touch 12.1" TFT LCD non-touch	
Line Display	2 x 20 rear-mount VFD/LCD customer line display	
Peripherals	MSR; RFID; Fingerprint Sensor	



Affordable Premium Performance

KS-7412/7412P

Compact Fanless POS Terminal

*Designed and Manufactured in Taiwan by Posiflex Technology, Inc.
*The product information and specifications are subject to change without prior notice.
*Please refer to the website for more attachment options.

Certifications		EN201709V2
----------------	--	------------



POSIFLEX TECHNOLOGY, INC.
No. 23, Datong St., Tucheng Dist., New Taipei City 23679, Taiwan
Tel : +886-2-2268-5577 E-mail : sales@posiflex.com.tw
Fax : +886-2-2268-5388 www.posiflex.com

Authorized Distributor / Reseller



Small but Delicate

Despite its small form factor, the KS-7412 Series comes with resistive and PCAP touch options. Its 12" LCD panel addresses the need for space, while offers adequate viewing area for daily operation.

Performance

The KS-7412 Series is equipped with a quad core Intel Bay Trail processor, which is more than enough to handle any daily operation.

Patented Fanless Technology

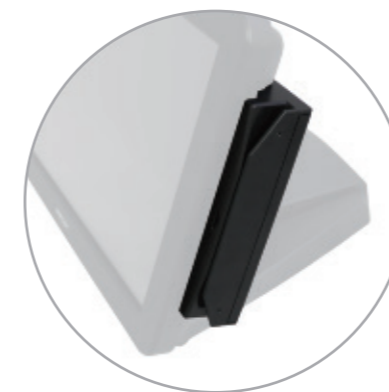
Fanless design not only allows the terminal to function well in harsh environment, it also enables the terminal to run quietly in places such as retail stores or hospitals, where silent operation is of utmost importance.

Expandable and Flexible

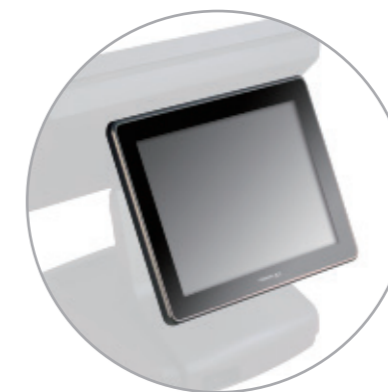
It supports versatile peripheral options such as MSR, line display, 2nd customer display for greater productivity and flexibility to fit in your store environment.

Did you ever feel a dilemma? 8" or 10" terminal is great due to its compact footprint, but the smaller terminal lacks the viewing area of the larger 15" terminal offering. However, 15" terminal simply takes up too much counter space...

The KS-7412 Series really offers the best of the both worlds. Its 12" LCD panel addresses the need for space, while offers adequate viewing area for everyday operation. Powered by Intel J1900 processor and the reliability that is synonymous with Posiflex brand, making the KS-7412 Series one of the best all-round performers in the field.



Optional MSR



Optional 2nd Display LCD



Optional Line Display